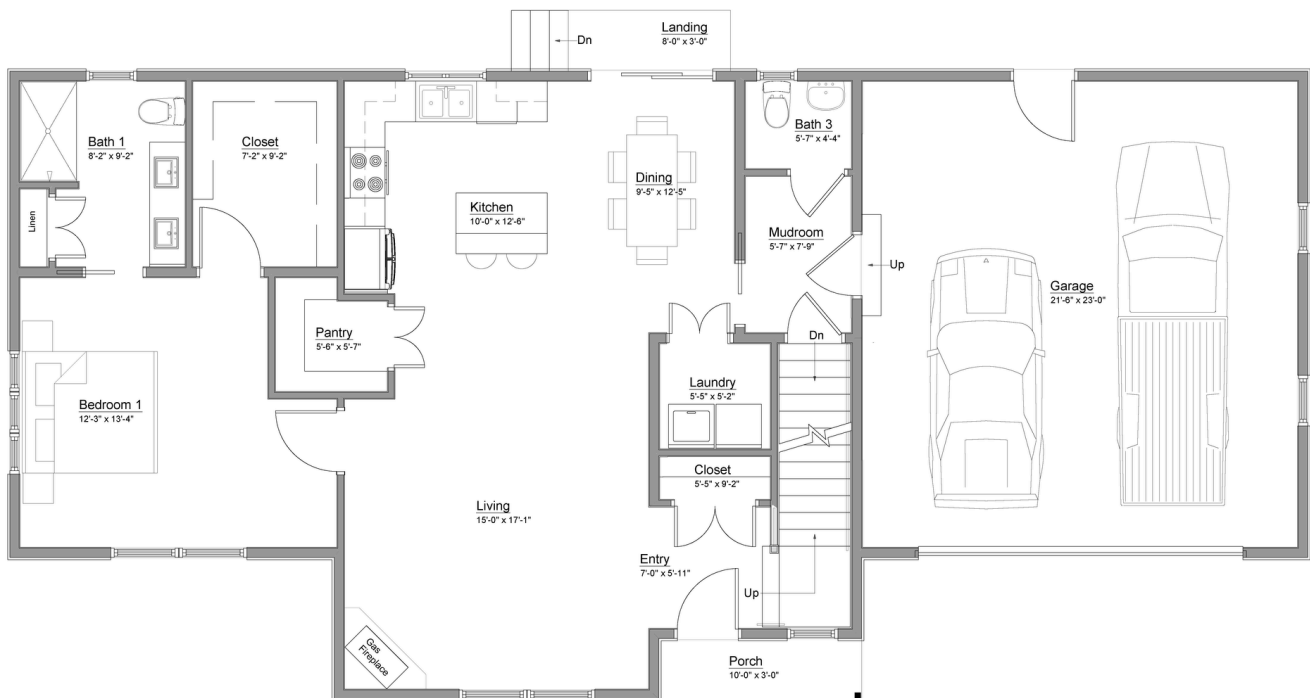




The BAYBERRY

First Floor Plan



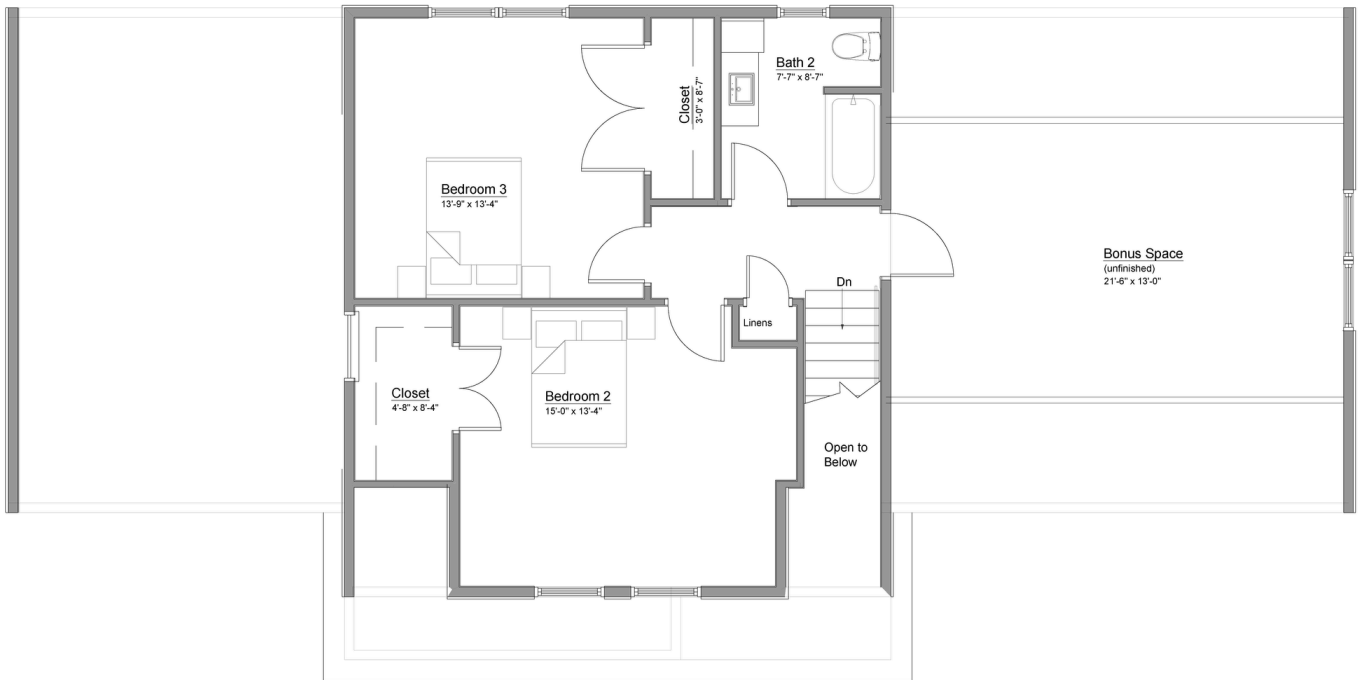
JOHN LIBBY
Construction

543 Harpswell Neck Rd
Harpswell, ME 04079
(207) 295-2042



The BAYBERRY

Second Floor Plan



JOHN LIBBY
Construction

543 Harpswell Neck Rd
Harpswell, ME 04079
(207) 295-2042



The BAYBERRY

Elevations



Front Elevation

1/4" = 1'-0"



Right Elevation

1/4" = 1'-0"



Left Elevation

1/4" = 1'-0"



Rear Elevation

1/4" = 1'-0"

JOHN LIBBY
Construction

543 Harpswell Neck Rd
Harpswell, ME 04079
(207) 295-2042