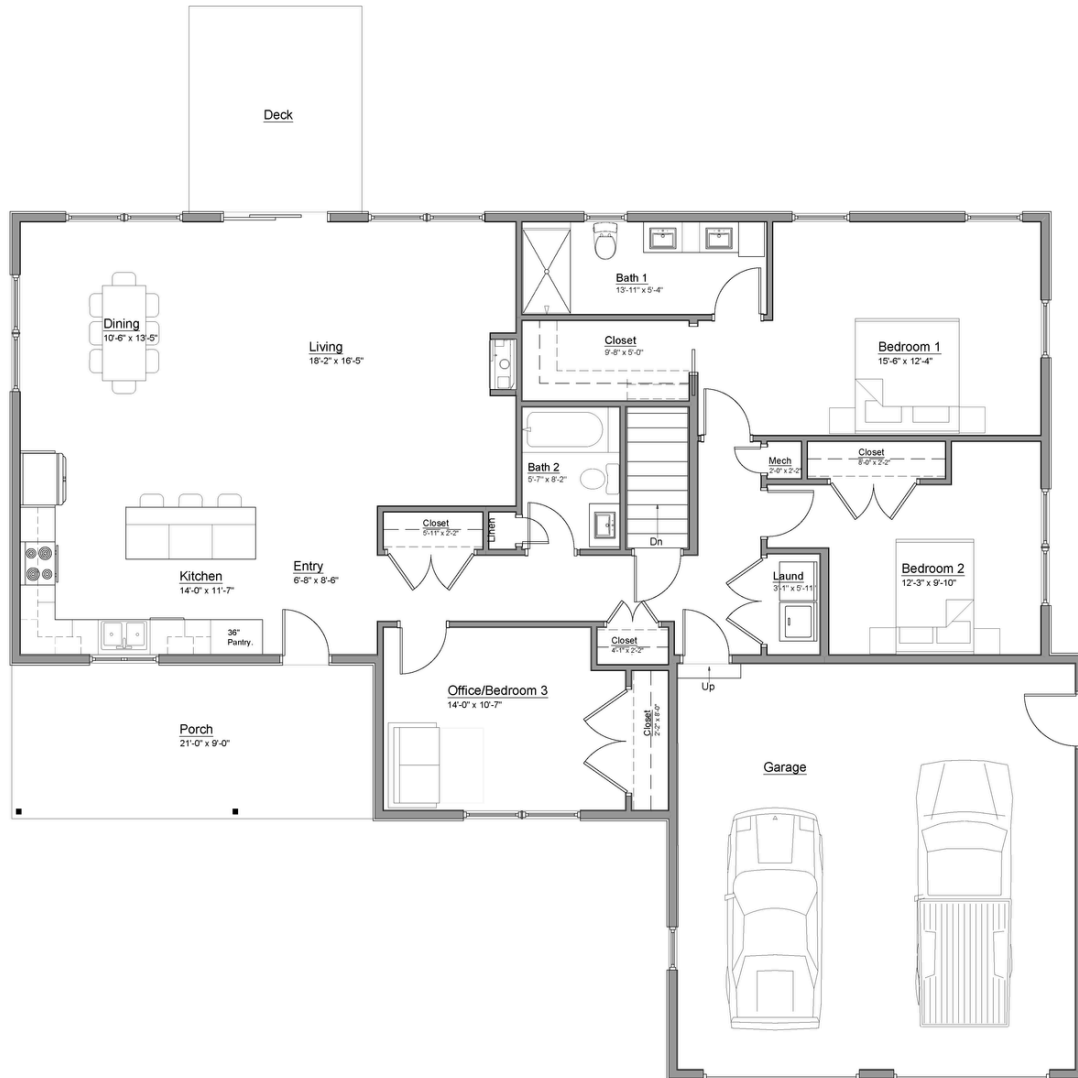




The ALDER

Floor Plan



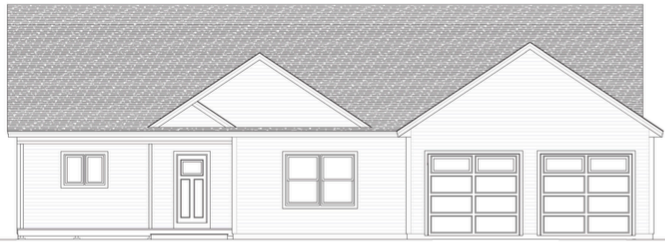
JOHN LIBBY
Construction

543 Harpswell Neck Rd
Harpswell, ME 04079
(207) 295-2042



The ALDER

Elevations



The Alder - Front Elevation

1/4" = 1'-0"



The Alder - Right Elevation

1/4" = 1'-0"



The Alder - Left Elevation

1/4" = 1'-0"



The Alder - Rear Elevation

1/4" = 1'-0"

JOHN LIBBY
Construction

543 Harpswell Neck Rd
Harpswell, ME 04079
(207) 295-2042