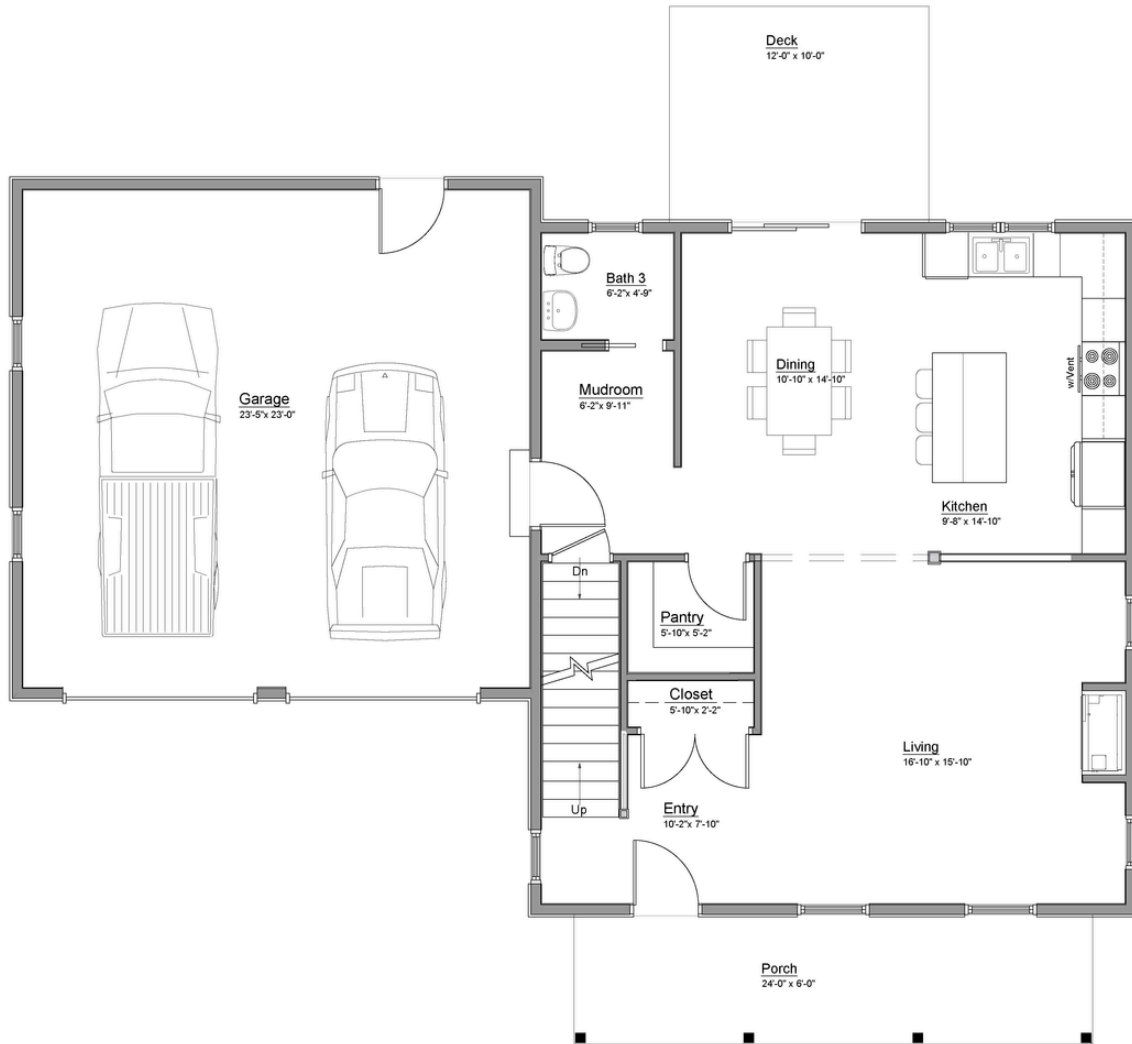




# The WILLOW

First Floor Plan



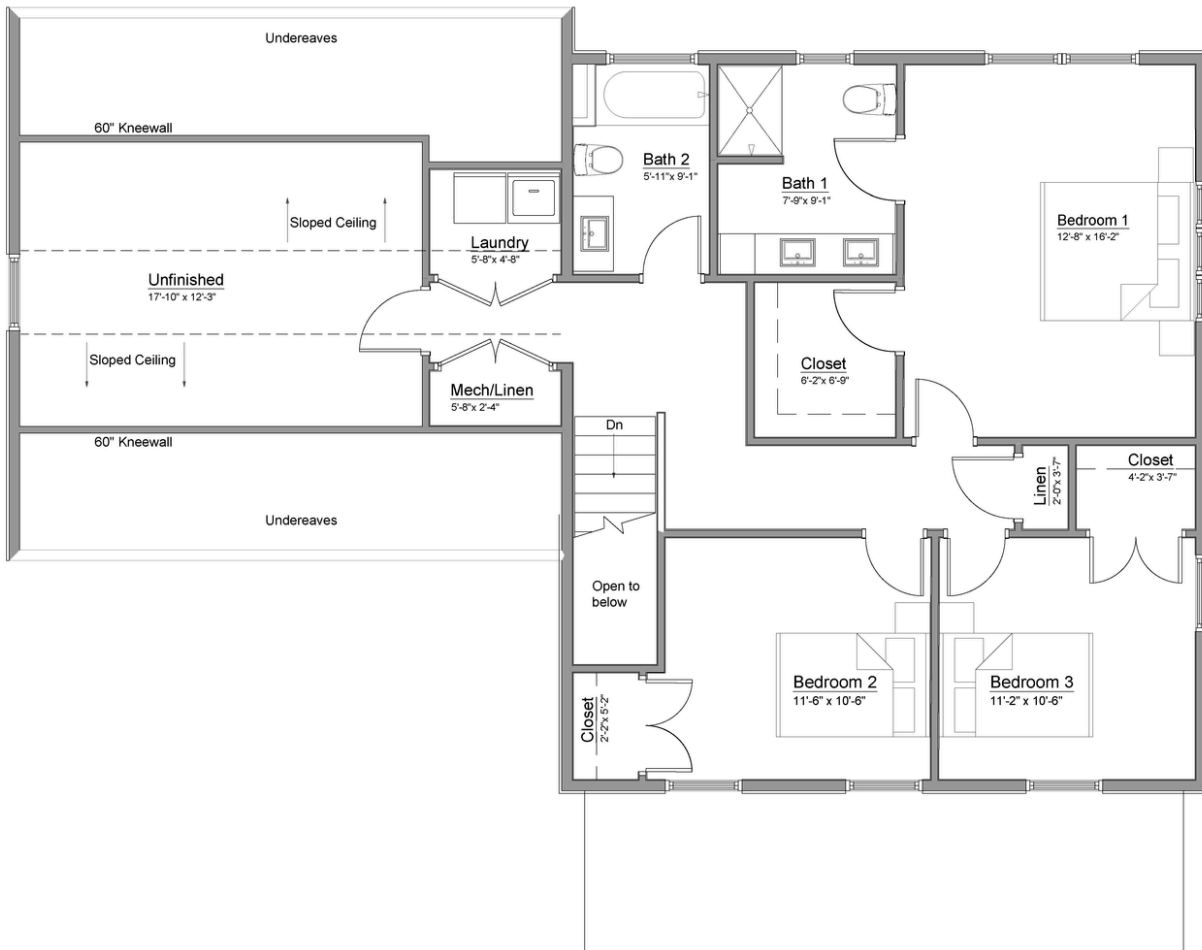
JOHN LIBBY  
*Construction*

543 Harpswell Neck Rd  
Harpswell, ME 04079  
(207) 295-2042



# The WILLOW

Second Floor Plan



JOHN LIBBY  
*Construction*

543 Harpswell Neck Rd  
Harpswell, ME 04079  
(207) 295-2042



# The WILLOW

Elevations



Front Elevation

1/4" = 1'-0"



Right Elevation

1/4" = 1'-0"



Left Elevation

1/4" = 1'-0"



Rear Elevation

1/4" = 1'-0"

JOHN LIBBY  
*Construction*

543 Harpswell Neck Rd  
Harpswell, ME 04079  
(207) 295-2042